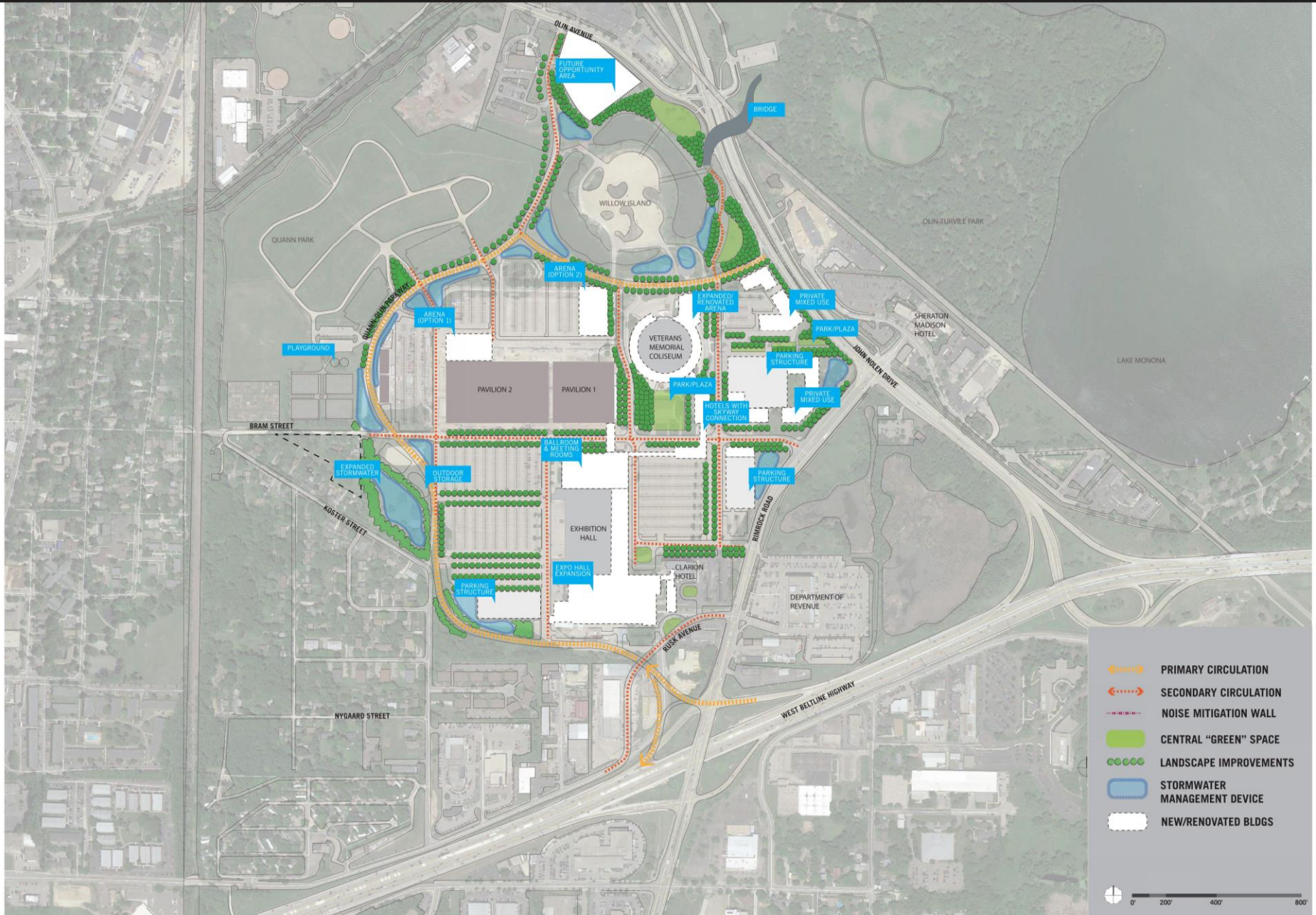


MASTER PLAN : REVISED OPTION



-  PRIMARY CIRCULATION
-  SECONDARY CIRCULATION
-  NOISE MITIGATION WALL
-  CENTRAL "GREEN" SPACE
-  LANDSCAPE IMPROVEMENTS
-  STORMWATER MANAGEMENT DEVICE
-  NEW/RENOVATED BLDGS

